

GXR-E40S PLUS

Diagnostic X-ray System

*Space-saving, competitively priced,
and high-quality*



GXR-E40S PLUS

Diagnostic X-ray System

The GXR-E40S PLUS, a compact diagnostic X-ray system with an integrated generator located beneath the patient table, seamlessly blends into a radiographic room setup, perfectly harmonizing with your workflow. Designed with the operator's convenience and the patient's comfort in mind, the system delivers excellent performance and user experience.



PBT-4 Essential

4 way table top Patient Table Built-in generator

The system is equipped with a high-frequency X-ray generator, ensuring consistent delivery of high-quality X-ray output with minimal kV ripple and precise mA & mAs.

| Generator Model | GXR-E40 |
|-------------------------------|--|
| Power Rating | 40kW |
| Line Power | 200–240V~ ± 10% (Frequency: 50/60Hz) |
| kV Range | 40~125kV, 1kV step |
| mA Range | 10 to 500mA |
| Timer Range | 0.001 to 10 sec, 38 steps |
| AEC Shortest Irradiation Time | 1ms |
| mAs Range | 0.1 to 320mAs (Optional 500mAs) |
| Max. Power Output | 500mA@80kV / 400mA@100kV / 320mA@125kV |
| Rotor Supply | Low Speed |
| Anatomical Programs | User programmable max 1,280 programs with APR utility software (Including Bucky & AEC selection) |
| Technique Selection | 4 point display(kV, mA, Time, mAs) |
| Image Receptors | 2 Bucky + 1 Non-Bucky |
| Dimension / Weight | 805(W) x 449(D) x 352(H)mm / 65kg(143.3lbs) |

*“GXR-E40S” is the model name of the Diagnostic X-ray System, and “PLUS” is the option name of the GXR-E40S

Floor Ceiling Suspended Type



WBS Essential
Wall Bucky Stand



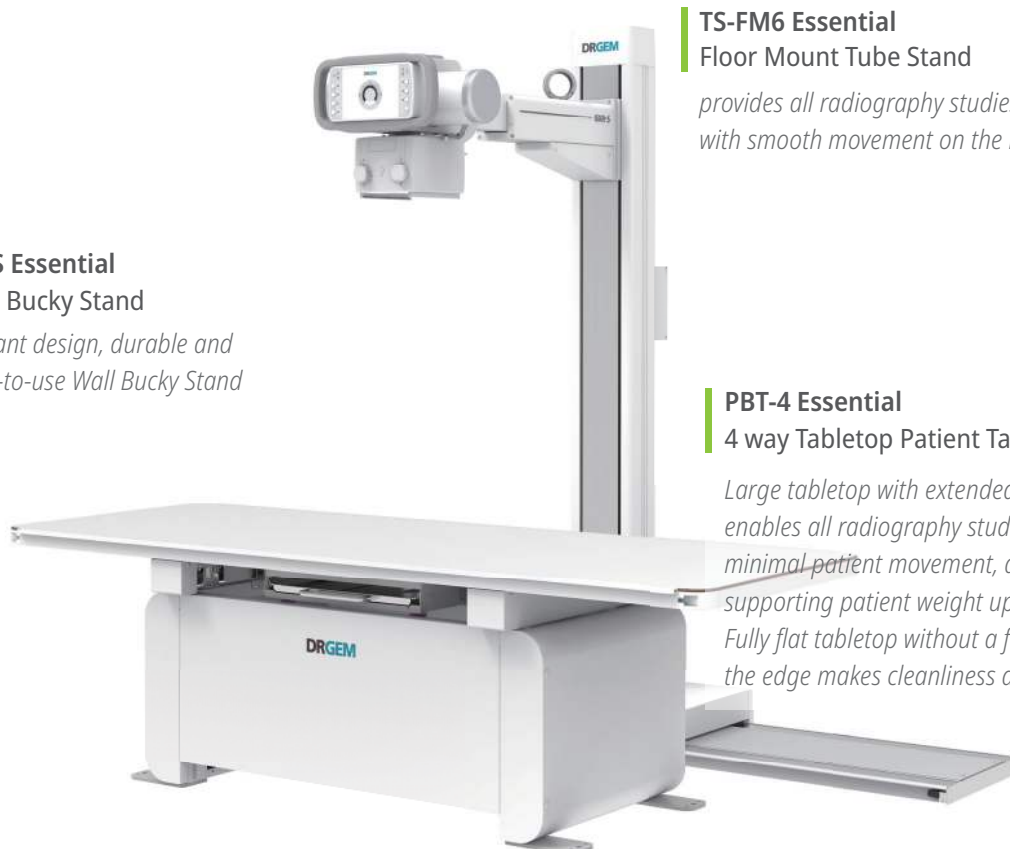
TS-FC6 Essential
Floor Ceiling Rail Type Tube Stand
Versatile fixed ceiling with slim rail design for smoother movement

PBT-4 Essential
4 way Tabletop Patient Table

Floor Mounted Type



WBS Essential
Wall Bucky Stand
Elegant design, durable and easy-to-use Wall Bucky Stand



TS-FM6 Essential
Floor Mount Tube Stand
provides all radiography studies with smooth movement on the rail

PBT-4 Essential
4 way Tabletop Patient Table
Large tabletop with extended travel enables all radiography studies with minimal patient movement, and supporting patient weight up to 300kg. Fully flat tabletop without a frame on the edge makes cleanliness and odors free

Generator Control

The operator control console is intuitively designed for user-friendly operation.



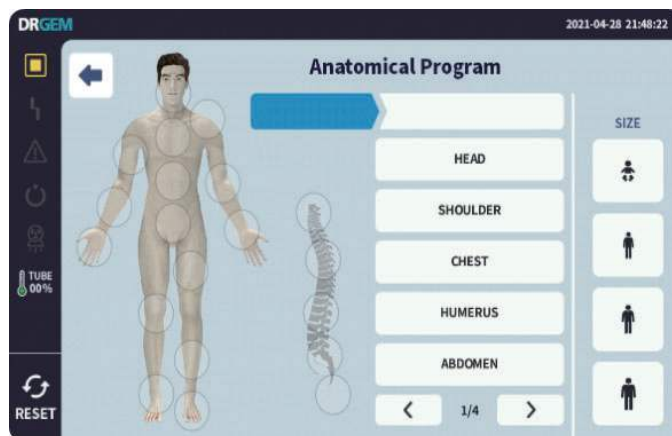
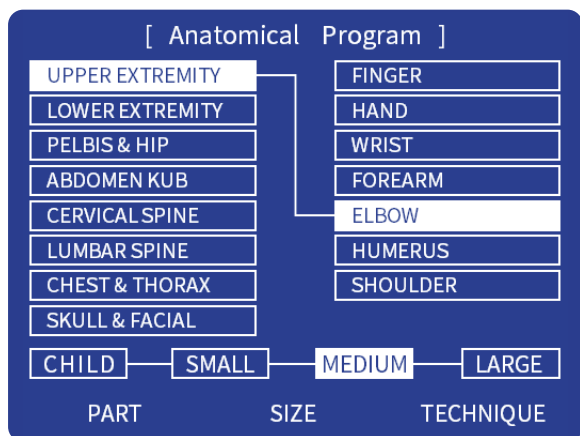
Membrane Console



Touch Console

User APR

Both text-based and graphical user interface options are available for APR (Anatomic Programming Radiography), providing versatility for users.



It can be easily upgraded to a DR system through the DR interface and PC interface in the generator, along with the Bucky compatible with FPD (Flat Panel Detector).

Fully Integrated DR System

- Full Integration with X-ray Generator
- Full Featured Imaging Software
- Excellent Digital Image Quality
- DICOM 3.0 Compliant

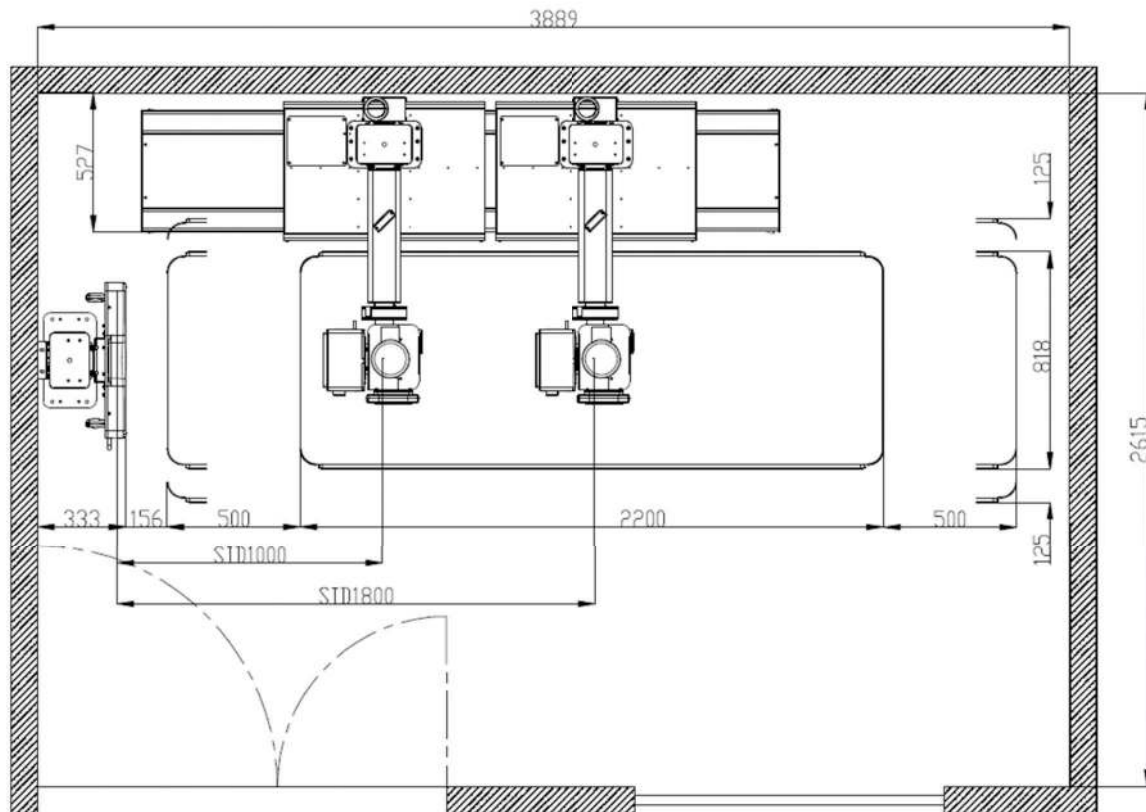


Other Options

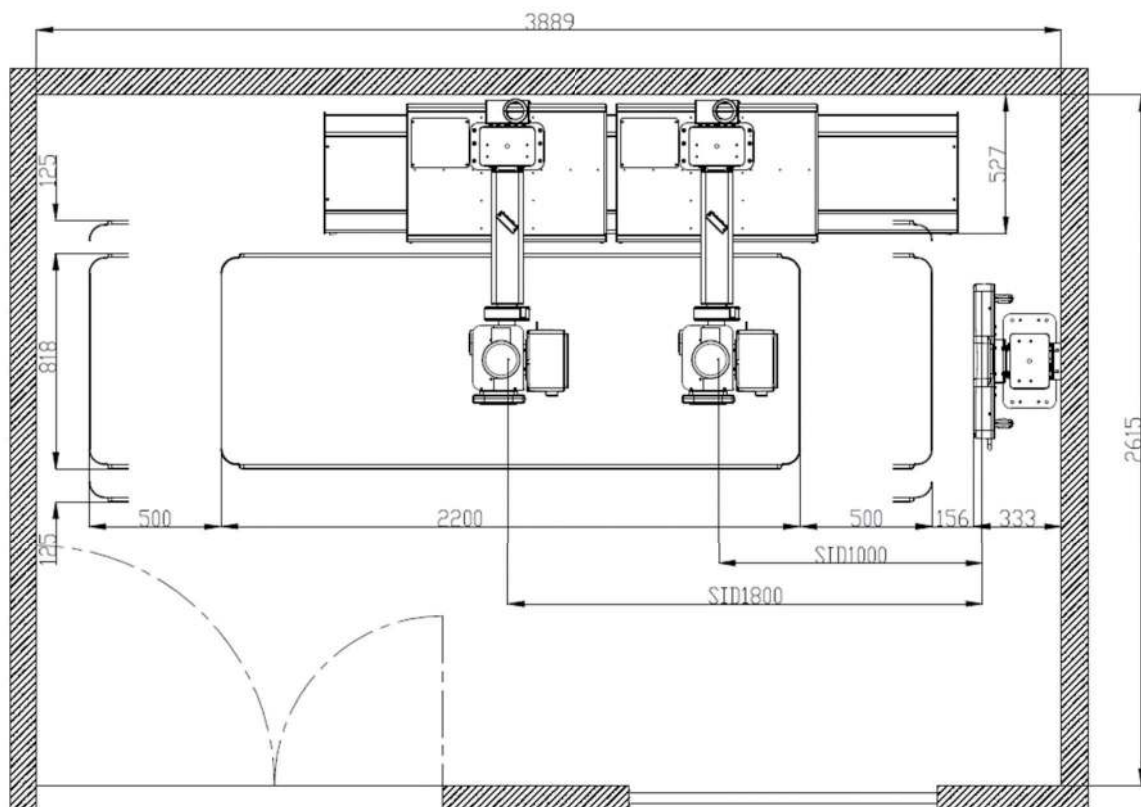
- AEC (Automatic Exposure Control)
- DAP (Dose Area Product) Meter

Effective Room Layout

- Minimum space (3889mm(W) x 2615mm(D) x 2100mm(H))
- Save space by putting the generator under the table
- Minimum room size provided for chest exposure



Left side Wall Bucky



Right side Wall Bucky



DISTRIBUTED BY
TI-BA ENTERPRISES, INC.
25 HYTEC CIRCLE, ROCHESTER NY 14606
TEL (585) 247-1212
EMAIL: INFO@TI-BA.COM
WWW.TI-BA.COM

DRGEM
Your Best Healthcare

©DRGEM Corporation - All rights reserved.
Reproduction in whole or in part is prohibited without the written consent of the copyright-holder.

Specifications and features are subject to change without notice.
All changes will be in compliance with regulations governing manufacture of medical equipment.

Address

Head Office/R&D 7F,E-B/D Gwangmyeong Techno-Park, 60 Haan-ro, Gwangmyeong-si, Gyeonggi-do, Korea (14322)
Gumi Factory 116-59, Sanho-daero, Gumi-si, Gyeongsangbuk-do, Korea (39377)
Gimcheon Factory 213, Saneopdanji-Ro, Eomo-Myeon, Gimchon-Si, Gyeongsangbuk-do, Korea (39536)